

GUITAR

Walkin' Shoes

TRANSCRIBED BY PEDRO BELLORA

COMPOSED BY GERRY MULLIGAN

♩ = 130

(DRUM HIT)

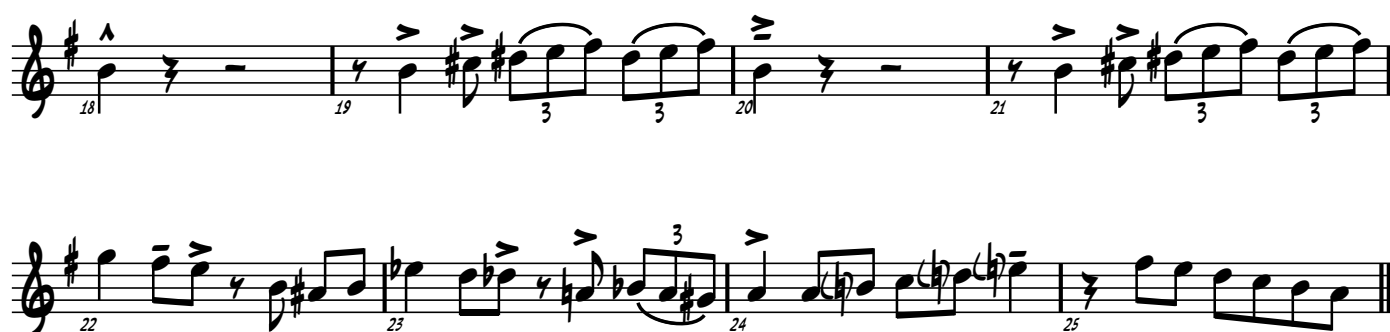
A (A1)



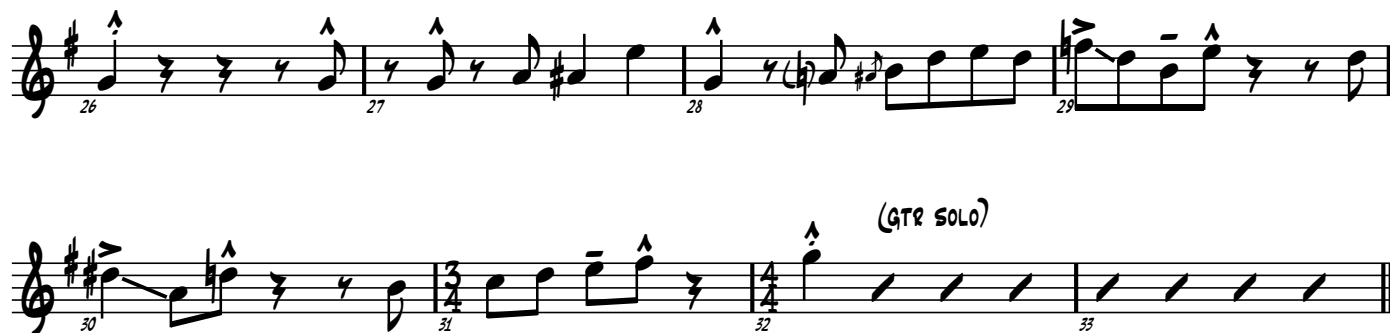
B (A2)



C (B)



D (A3)



2

GUITAR

E (A1)

G¹³ C⁷ G¹³ B⁻⁷ E⁷(b9)

A⁻⁷ D⁷ B⁻⁷ E⁷ A⁷ D⁷

F (A2)

G¹³ C⁷ G¹³ B⁻⁷ E⁷(b9)

A⁻⁷ D⁷ G^{MA7}

G (B)

B⁻⁷ % E⁻⁷ %

A⁷ % A⁻⁷ D⁷

I (A3)

G¹³ C⁷ G¹³ B⁻⁷ E⁷(b9)

A⁻⁷ D⁷ B⁻⁷ E⁷ A⁷ D⁷

J (A1)

G¹³ C⁷ G¹³ B⁻⁷ E⁷(b9)

A⁻⁷ D⁷ B⁻⁷ E⁷ A⁷ D⁷

66 (BARI SOLO)

67 68 69 70 71 72 73

K (A2)

74 75 76 77

A-7 D7 GMA7

78 79 80

%

81 (TO WRITTEN LINE...)

L (C)

82 83 84 85

86 87 88 89

M (A3)

90 91 92 93

94 95 96 97

N (CODA)

98 99 100 101

102 103 104 105 106