

## BARITONE PART FOR B $\flat$ INSTRUMENTS

# Swing House

TRANSCRIBED BY PEDRO BELLOSA

COMPOSED BY GERRY MULLIGAN

♩ = 130 (EVEN 8'S)

♩ = 130 (EVEN 8'S)

**A**

♩ = 150 (EVEN 8/5)

5 6 7

8 9 10 (TO DOUBLE TIME...)

11 12 13 14 (TO HALF TIME...) 15

**B**

17 18 19 20 21 22 23 24 25 26 27 28

1. 29 30 31 (SOLO) 32 (ENS)

2. 33 34 35 (SOLO) 36

C

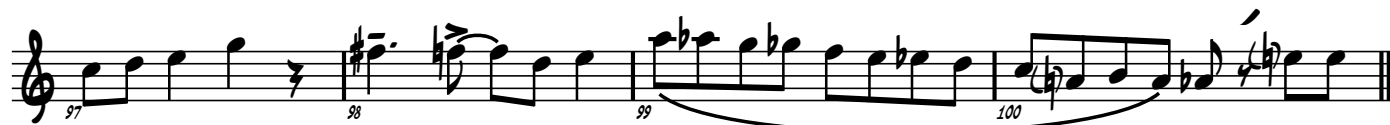
**A<sup>7</sup>** % % % **D<sup>7</sup>** % % %  
 37 (GTR. THEN BARI) 38 39 40 41 42 43 44  
**G<sup>7</sup>** % % % **C<sup>7</sup>** % % **C<sup>7</sup>** **E<sup>7</sup>** 3 (OPT.)  
 45 46 47 48 49 50 51 52  
**A<sup>7</sup>** % % % (OPT.)  
 53 54 55 56  
**D<sup>7</sup>** % % %  
 57 58 59 60  
**G<sup>7</sup>** % % %  
 61 62 63 64  
**C<sup>7</sup>** % % **C<sup>7</sup>** **E<sup>7</sup>**  
 65 67 68

D

69 70 71 72  
 73 74 75 76  
 77 78 7

E

85 86 87 88



F



1.



2.



G



(CUE FROM GTR)