

BARITONE PART FOR C INSTRUMENTS

Makin' Whoopee

TRANSCRIBED BY PEDRO BELLORA

COMPOSED BY WALTER DONALDSON

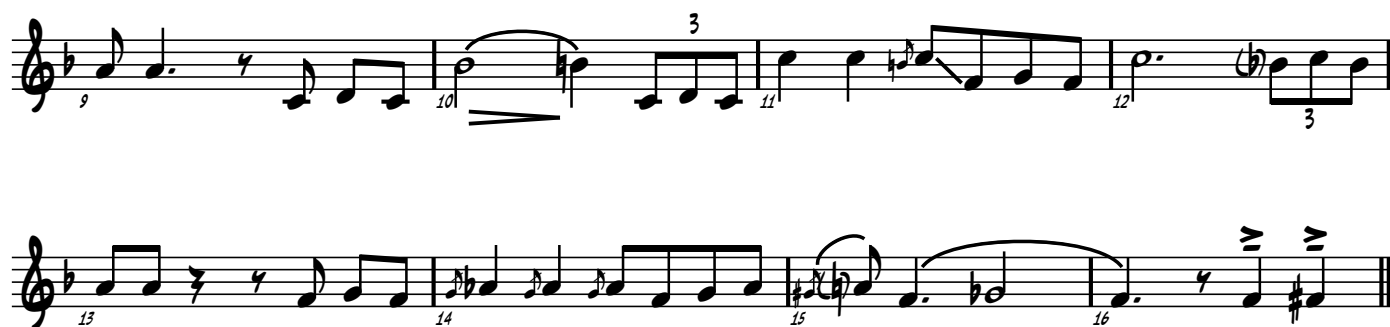
ARRANGED BY GERRY MULLIGAN

♩ = 90

A (A1)



B (A2)



C (B)



D (A3)



E (A1)

F^{MA}7 D⁷/F[#] G⁻⁷ E⁷/G[#] F^{MA}7/A F⁷ B^bMA⁷ E^b7F^{MA}7 B^bMA⁷ B^o7 F^{MA}7/C A^b7 G⁻⁷ C⁷

F (A2)

F^{MA}7 D⁷/F[#] G⁻⁷ E⁷/G[#] F^{MA}7/A F⁷ B^bMA⁷ E^b7F^{MA}7 B^bMA⁷ B^o7 F^{MA}7/C G⁻⁷ F^{MA}7 D⁻⁷ D^b7

G (B)

C⁻⁷ F⁷ B^bMA⁷ B^b-7 E^b7 A^bMA⁷C⁻⁷ F⁷ B^bMA⁷ B^b-7 E^b7

H (A3)



POCO RALL.



A TEMPO

