

BASS

Line For Lyons

TRANSCRIBED BY PEDRO BELLORA

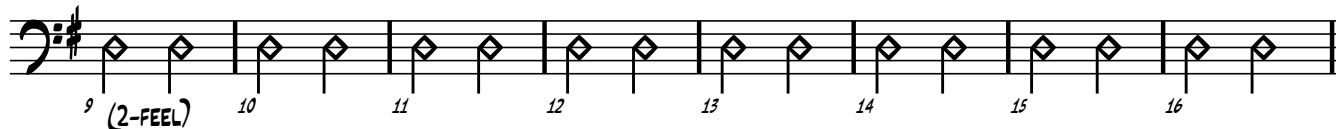
COMPOSED BY GERRY MULLIGAN

♩ = 150



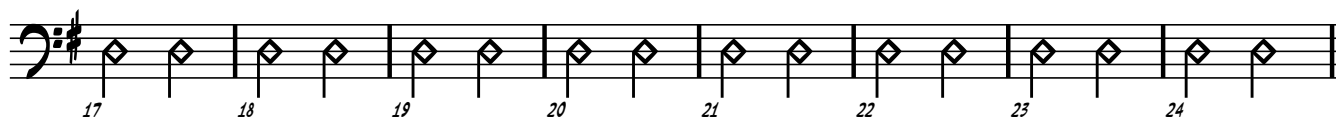
A (A2)

G^{MA7} G⁷ C⁻⁷ F⁷ B⁻⁷ E⁷ A⁻⁷ D⁷ G^{MA7} E⁷ A⁻⁷ D⁷ G^{MA7} G⁷



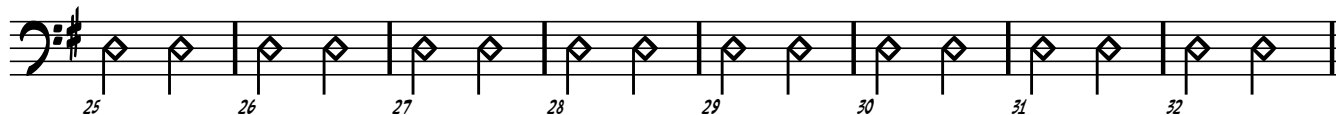
B (B)

C^{MA7} F^{#7} B⁻⁷ E⁷ A⁻⁷ D⁷ B⁻⁷ E⁷ A⁻⁷ D⁷



C (A3)

G^{MA7} G⁷ C⁻⁷ F⁷ B⁻⁷ E⁷ A⁻⁷ D⁷ G^{MA7} E⁷ A⁻⁷ D⁷ G^{MA7} E⁷ A⁻⁷ D⁷



D (SOLOS)

G^{MA7} G⁷ C⁻⁷ F⁷ B⁻⁷ E⁷ A⁻⁷ D⁷ G^{MA7} E⁷ A⁻⁷ D⁷ G^{MA7} A⁻⁷ D⁷



G^{MA7} G⁷ C⁻⁷ F⁷ B⁻⁷ E⁷ A⁻⁷ D⁷ G^{MA7} E⁷ A⁻⁷ D⁷ G^{MA7} G⁷



C^{MA7} F^{#7} B⁻⁷ E⁷ A⁻⁷ D⁷ B⁻⁷ E⁷ A⁻⁷ D⁷



G^{MA7} G⁷ C⁻⁷ F⁷ B⁻⁷ E⁷ A⁻⁷ D⁷ G^{MA7} E⁷ A⁻⁷ D⁷ G^{MA7} E⁷ A⁻⁷ D⁷



E (HEAD OUT)

G_{MA}⁷ G⁷ C-⁷ F⁷ B-⁷ E⁷ A-⁷ D⁷ G_{MA}⁷ E⁷ A-⁷ D⁷ G_{MA}⁷ E⁷ A-⁷ D⁷

65 (GTR + BARI SOLO) 67 68 69 70 71 72

G_{MA}⁷ G⁷ C-⁷ F⁷ B-⁷ E⁷ A-⁷ D⁷ G_{MA}⁷ E⁷ A-⁷ D⁷ G_{MA}⁷ G⁷

73 74 75 76 77 78 79 80 (TO 2-TIME FEEL...)

C_{MA}⁷ F^{#7} B-⁷ E⁷ A-⁷ D⁷ B-⁷ E⁷ A-⁷ D⁷

81 82 83 84 85 86 87 88

G_{MA}⁷ G⁷ C-⁷ F⁷ B-⁷ E⁷ A-⁷ D⁷ G_{MA}⁷ E⁷ A-⁷

89 90 91 92 93 94 (TO WRITTEN LINE...)

G_{MA}⁷

(GUITAR CUE. DON'T PLAY)

95 96 97 98 99

The bass line notation consists of five staves. The first two staves (measures 65-80) feature a continuous eighth-note pattern, indicated by a bracket and the text '(GTR + BARI SOLO)'. The third staff (measures 81-88) shows a sequence of eighth notes, each with a diamond-shaped chord symbol above it. The fourth staff (measures 89-94) continues with eighth notes and diamond-shaped chord symbols. The fifth staff (measures 95-99) begins with a whole rest, followed by a quarter note, then a half note with an accent (^), and finally a series of eighth notes with 'x' marks above them, indicating a guitar cue. The piece ends with a final quarter note and a double bar line.