

Fun House - Bernie's Tune

REARRANGED BY PEDRO BELLORA

COMPOSED BY GERRY MULLIGAN

A (INTRO) $\text{♩} = 200$ **B (INTRO 2)**

C (FIRST 'A' OF CHORUS)

D (A2)

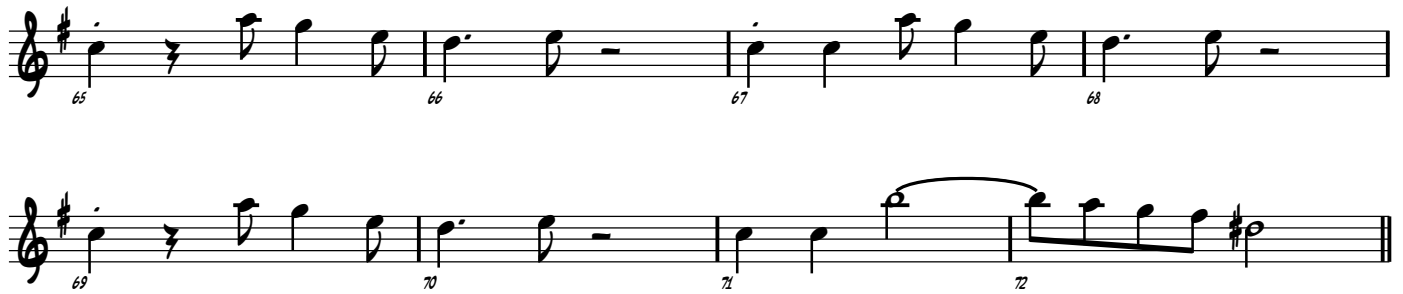
E (B) CMA^7 A^{-7} D^{-7} G^7 CMA^7 A^{-7} D^{-7} G^7

F (A3) CMA^7 A^{-7} D^{-7} G^7 CMA^7 $\text{F}\sharp^{-7}\text{b}5$ $\text{B}^7\text{b}9$ (TO WRITTEN LINE...)

G (A1 OF 'BERNIE'S')

H (A2)

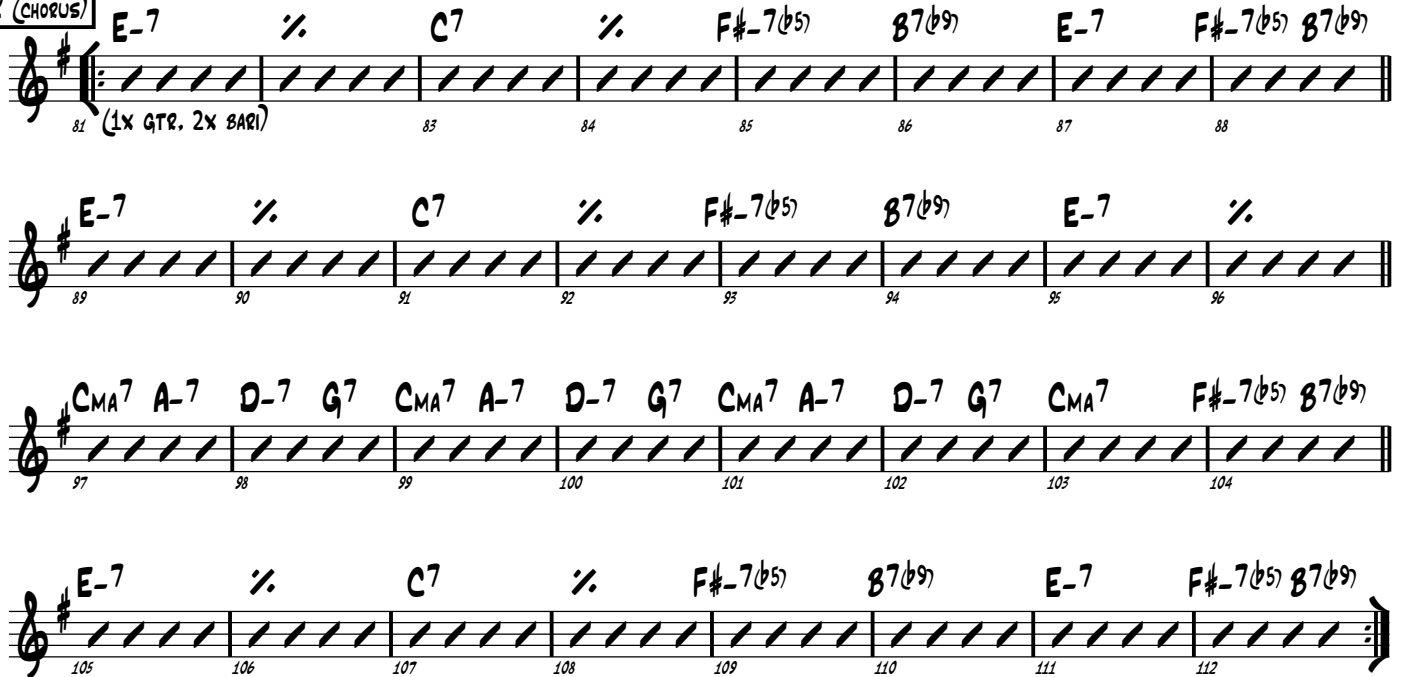
I (8)



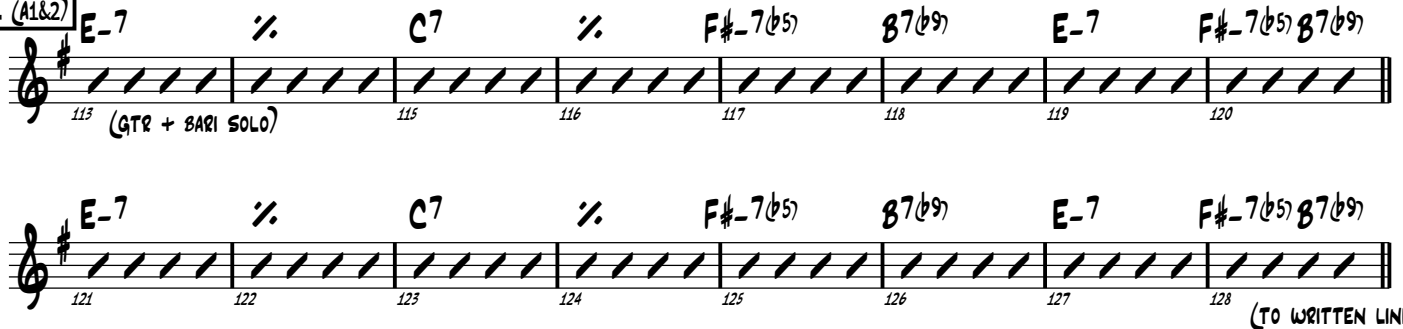
J (A3)



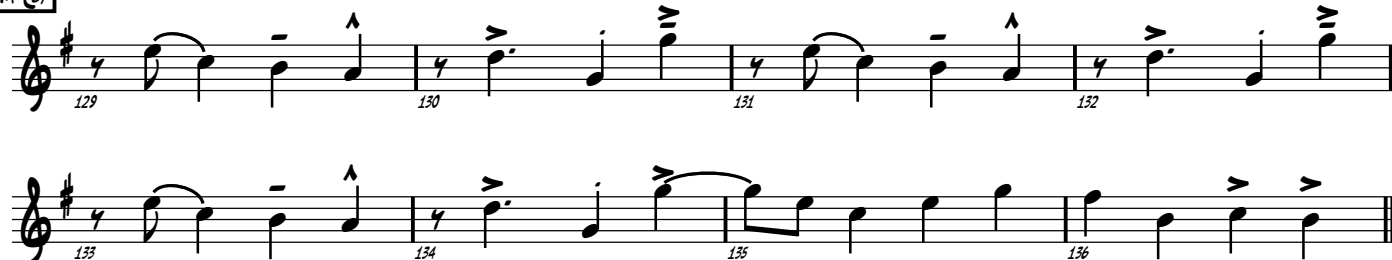
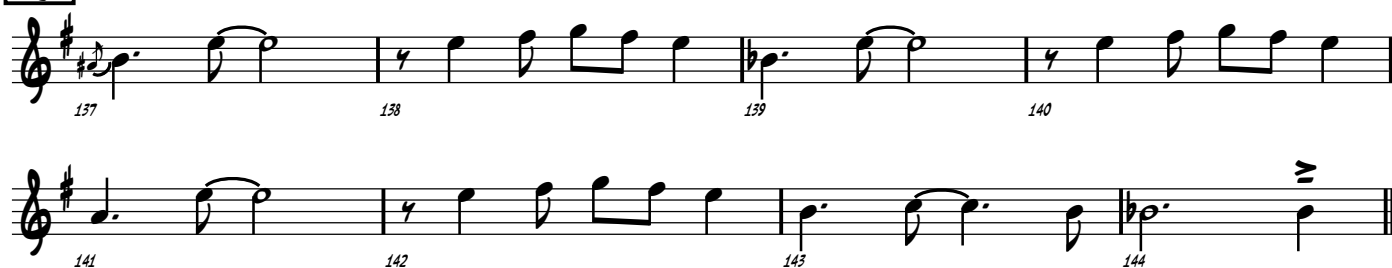
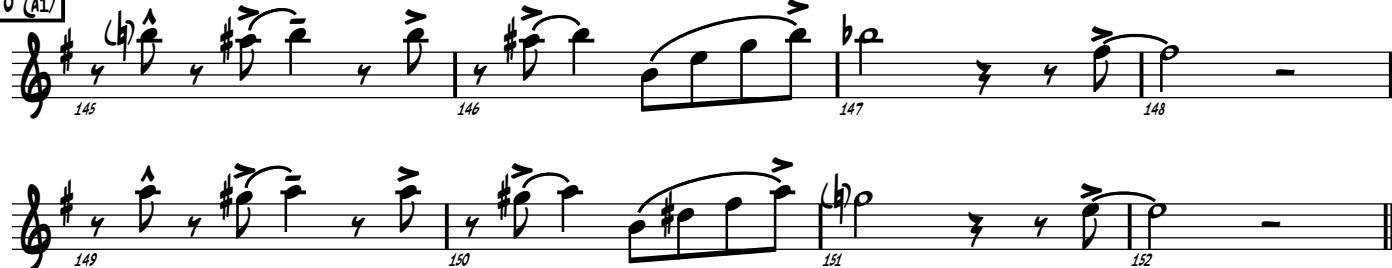
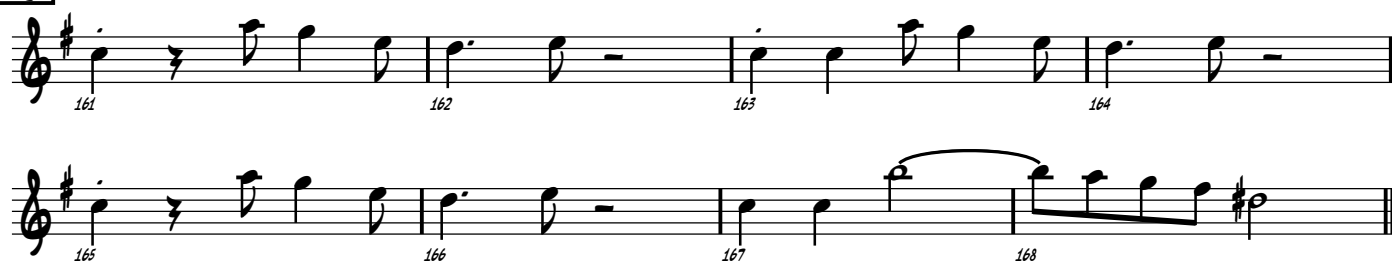
K (CHORUS)



L (A1&2)



(TO WRITTEN LINE...)

M (B)**N (A3)****O (A1)****P (A2)****Q (B)****R (A3)**

(ON CUE FROM BASS)