

DRUMS

Swing House

TRANSCRIBED BY PEDRO BELLORA

COMPOSED BY GERRY MULLIGAN

♩ = 130 (EVEN 8'S) (SOLO, MARCH FEEL)

f (BRUSHES ON SNARE)

A ♩ = 130 (EVEN 8'S) (SWING!)

mf (SIM.)

(TO DOUBLE TIME...)

♩ = 260 (SWING)

1. 2.

(TO HALF TIME...)

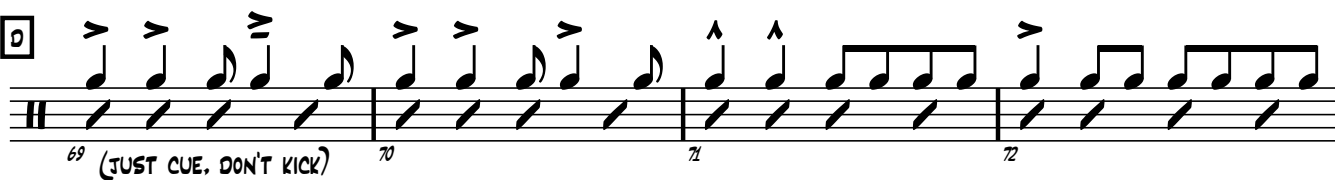
B (SWING)

1.

2.

C

(GTR. THEN BARI)

**D**

(SOLO. TRADE)

**E**

89 90 91 92

(SOLO)

93 94 95 96

(SOLO)

97 98 99 100

F 101 102 103 104

(BACK TO LIGHT MARCH FEEL)

105 106 107 108

109 110 111 112

(TO SWING...)

1. 113 114 115 116

2. 117 118 119 120

(OPT.)

G 121 122 123 124

(OPT.)

125 126 127

(CUE FROM GTR)