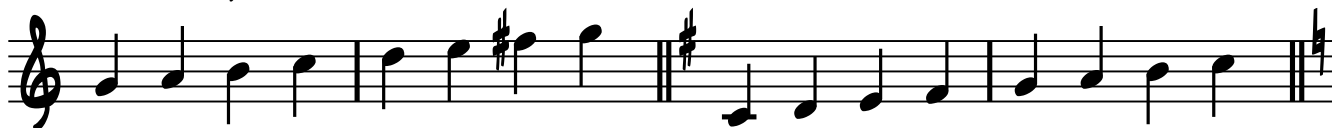


Armaduras de Clave

ESCALA DE C



ESCALA DE G



ESCALA DE D



ESCALA DE A



ESCALA DE E



ESCALA DE B



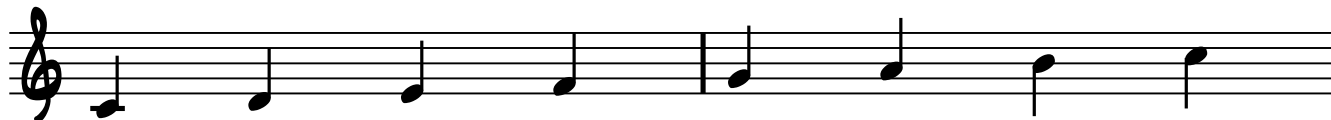
ESCALA DE F#



ESCALA DE C#



NO TIENE MUCHO SENTIDO, PORQUE C# TIENE 7 SOSTENIDOS Y D BEMOL (QUE ES LO MISMO) TIENE SOLO 5 BEMOL.
TE AHORRAS DOS ALTERACIONES.

ESCALA DE C**ESCALA DE F****ESCALA DE B BEMOL****ESCALA DE E BEMOL****ESCALA DE A BEMOL****ESCALA DE D BEMOL****ESCALA DE G BEMOL**

C Db D

A musical staff in treble clef with a C major key signature (no sharps or flats). It contains three measures, each with a whole rest. Above the staff, the chords C, Db, and D are labeled. The key signature changes to Db major (two flats) for the second measure and to D major (two sharps) for the third measure.

Eb E F

A musical staff in treble clef with an Eb major key signature (three flats). It contains three measures, each with a whole rest. Above the staff, the chords Eb, E, and F are labeled. The key signature changes to E major (three sharps) for the second measure and to F major (one flat) for the third measure.

F# Gb G Ab

A musical staff in treble clef with an F# major key signature (four sharps). It contains four measures, each with a whole rest. Above the staff, the chords F#, Gb, G, and Ab are labeled. The key signature changes to Gb major (three flats) for the second measure, to G major (one sharp) for the third measure, and to Ab major (four flats) for the fourth measure.

A Bb B

A musical staff in treble clef with an A major key signature (three sharps). It contains three measures, each with a whole rest. Above the staff, the chords A, Bb, and B are labeled. The key signature changes to Bb major (two flats) for the second measure and to B major (two sharps) for the third measure.